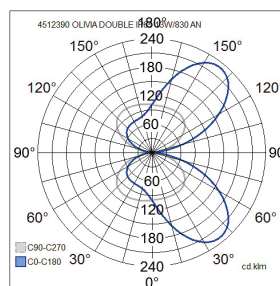
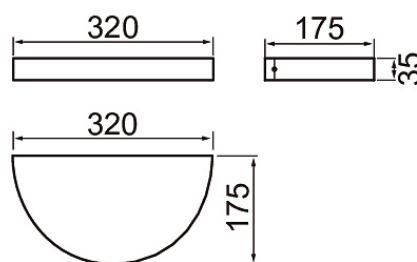
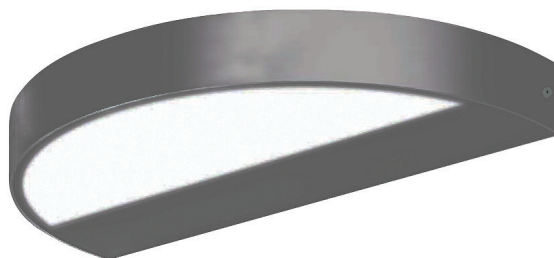




## Olivia Double

Olivia Double is a low-profile wall luminaire for indoor and outdoor use. The clean-lined, rounded design is ideal for a wide range of applications. The luminaire has two LED light sources: one an uplight, the other a downlight. The luminaire housing is coated with polyester paint that is resistant to corrosion and UV radiation, and the screws are made of stainless steel.

- Aluminium housing and frosted glass diffuser.
- Anthracite, silver, black and white.
- Protection class I.
- Surface mounting.
- Not linkable, 3 x 1.5 mm<sup>2</sup>.
- Installation height 0–3 m.
- Integrated LED 13 W / 1,000–2,100 lm.
- Colour temperatures 3,000 K and 4,000. CRI >80 / Ra > 80.
- IP65.
- IK06.
- On/off.
- Ambient temperature range -25 ... 25 °C
- Rated lifetime L70 50,000 h (Ta25°C).
- Power source service life 50,000 h.
- AN = anthracite, SI = silver, BK = black, WH = white.
- Also available in Corten colour on a project-specific basis.



By order

### Olivia Double 830

NO.	CODE	W	LM
4512390	B5OLBD IP65 13W/830 GLFR AN Olivia D	13	2010
4512391	B5OLBC IP65 13W/830 GLFR SI Olivia D	13	2010
4512392	B5OLBB IP65 13W/830 GLFR BK Olivia D	13	2010
4512393	B5OLBA IP65 13W/830 GLFR WH Olivia D	13	2010

### Olivia Double 840

NO.	CODE	W	LM
4512395	B5OLBJ IP65 13W/840 GLFR AN Olivia D	13	2100
4512396	B5OLBH IP65 13W/840 GLFR SI Olivia D	13	2100
4512397	B5OLBG IP65 13W/840 GLFR BK Olivia D	13	2100
4512398	B5OLBF IP65 13W/840 GLFR WH Olivia D	13	2100