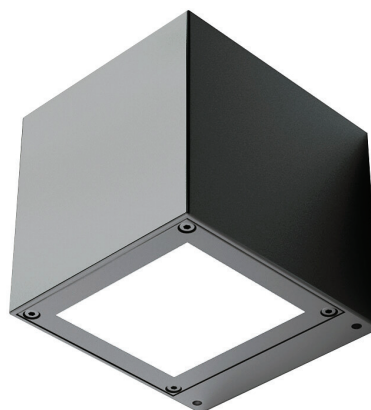


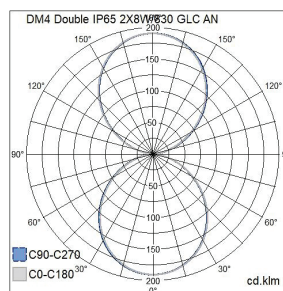
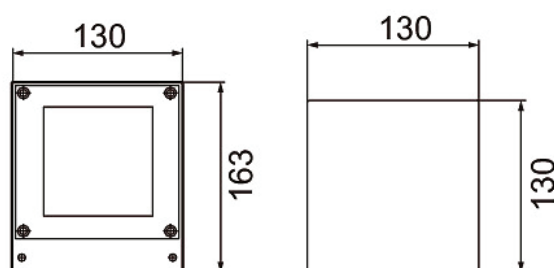


DM4 Double

The modern and clean-lined DM4 Double, which distributes light in two directions, is suitable for indoor and outdoor use in single-family homes, for example. While both models distribute light up and down, the NW model has an extremely narrow upward beam. It comes with an integrated LED. High-quality surface treatment, stainless steel screws. Read more about the matching DM4 Stelo bollard luminaires.



- Aluminium housing and transparent glass diffuser.
- Anthracite, silver, black and white.
- Protection class I.
- Surface mounting.
- Not linkable, 3 x 2.5 mm.
- Installation height 0.5–4 m.
- Integrated LED 8–16 W, 805–1,680 lm.
- Colour temperatures 3,000 K and 4,000. CRI > 80 / Ra > 80.
- IP65.
- IK05.
- On/off.
- Ambient temperature range -25 ... 35 °C
- Rated lifetime L70 50,000 h (Ta25°C).
- Power source service life 50,000 h.
- AN = anthracite, SI = silver, BK = black, WH = white.



By order

DM4 Double wide beam + wide beam 830

NO.	CODE	W	LM
4511684	B5DMGD IP65 2X8W/830 GLC AN	16	1610
4511685	B5DMGC IP65 2X8W/830 GLC SI	16	1610
4511686	B5DMGB IP65 2X8W/830 GLC BK	16	1610
4511687	B5DMGA IP65 2X8W/830 GLC WH	16	1610

DM4 Double wide beam + wide beam 840

NO.	CODE	W	LM
4511692	B5DMJD IP65 2X8W/840 GLC AN	16	1680
4511693	B5DMJC IP65 2X8W/840 GLC SI	16	1680
4511694	B5DMJB IP65 2X8W/840 GLC BK	16	1680
4511695	B5DMJA IP65 2X8W/840 GLC WH	16	1680

DM4 Double wide beam + narrow beam 830

NO.	CODE	W	LM
4511676	B5DMKD IP65 2X8W/830 GLC NW AN	16	1610
4511677	B5DMKC IP65 2X8W/830 GLC NW SI	16	1610
4511678	B5DMKB IP65 2X8W/830 GLC NW BK	16	1610
4511679	B5DMKA IP65 2X8W/830 GLC NW WH	16	1610

DM4 Double wide beam + narrow beam 840

NO.	CODE	W	LM
4511680	B5DMLD IP65 2X8W/840 GLC NW AN	16	1680
4511681	B5DMLC IP65 2X8W/840 GLC NW SI	16	1680
4511682	B5DMLB IP65 2X8W/840 GLC NW BK	16	1680
4511683	B5DMLA IP65 2X8W/840 GLC NW WH	16	1680